

# dolemon

UNITYWEAR | ユナイテッド着る



2019 - 2020 Collection

“Unitywear brings success & happiness”

Dolemon aims to supply premium quality activewear at an affordable price, via volume purchases. We want to ensure every team has the option to comfortable activewear.

## Our Mission

To inspire great team spirit & unity through innovation in active apparel.





# C O N T E N T S

6	2018 Best Seller
7	2019 New Arrival
8-19	OUTRÉFIT BASIC [Friends & Family Series]
10-11	OUTRÉFIT BASIC [Did You Know?]
20-37	OUTRÉFIT PREMIUM [Plain Collection]
38-47	OUTRÉFIT PREMIUM [Reflective Design Polo]
48-57	OUTRÉFIT PREMIUM [Neon-Tech Sub Round Neck]
58-69	OUTRÉFIT PREMIUM [Neon-Tech Sub Polo]
70-77	CASUAL & CORPORATE [Cotton Tee, Polo & Vest, Jacket]
78-91	OUTRÉFIT PREMIUM [Jersey & Jacket]
92-100	OUTRÉFIT HEADGEAR [Kids & Adult Cap]
101-104	TUALA OPPA [Economical Towel]
105-131	Offer Products





# 2018 BEST SELLER

CUSTOMER'S FAVOURITE

お客様のお気に入り



**MOP PREMIUM POLO**  
Page 30 - 37



**MOP REFLECTIVE POLO**  
Page 44 - 45



**QDP 53 POLO**  
Page 16 - 17



**QDY 61 KIDS**  
Page 14 - 15



**MOZ 45 REFLECTIVE ZIP**  
Page 40 - 41



**MOF 36 TIME LAPSE**  
Page 65



**QDL 54 LONG SLEEVE**  
Page 19



**MOF 33 HARIMAU**  
Page 62



**TJ 1 JACKET**  
Page 82 - 83



**YTJ 1 KIDS JACKET**  
Page 84 - 85



**MOR 39 CAMOUFLAGE**  
Page 54



**MOV 40 TWILIGHT**  
Page 55



**H7 TRUCKER CAP**  
Page 100



**MOF 32 REFLECTIVE SUB**  
Page 60 - 61



**YH5 KIDS SNAPBACK**  
Page 99



**YH6 KIDS BASEBALL**  
Page 96 - 97



# OUTRÉFIT BASIC

FRIENDS & FAMILY COLLECTION

友達と家族のコレクション





# OUTRÉFIT BASIC

## DID YOU KNOW?

### 1. TEAR-AWAY LABEL



**OUTRÉFIT BASIC** label is tear-away. It's flexible for anyone who wants to create their own brand with our high demand microfiber fabric.

### 2. SHRINKAGE & COLOUR FADING

#### COTTON T-SHIRT



Shrinkage is common for cotton based clothing, if you wash in hot water or drying using hot air.

The color fades faster as well. It's **HARDER** to maintain than microfiber t-shirt.

#### OUTRÉFIT BASIC



**OUTRÉFIT BASIC** is resistant to shrink because It is made of synthetic fabric.

The colour holds better than cotton. It is **LONG LASTING** than cotton. Good return of investment.

### 3. WRINKLE-RESISTANT

#### COTTON POLO



Cotton fabric wrinkles after laundry wash. You have to iron everyday because what you wear represent your personality or company's image.

#### OUTRÉFIT BASIC



**OUTRÉFIT BASIC** is wrinkle resistant (less wrinkle). You don't need to iron after wash.

It's convenient & easy to maintain for everyday wear, especially uniform.

# OUTRÉFIT BASIC

## DID YOU KNOW?

### 4. COOLING & DRYING

#### SETTING UP



We place t-shirt on a heavy duty fan, tested with Anemometer. It is a device used for measuring wind speed.

#### EYELET MICROFIBER



The highest rating for eyelet fabric in the market is only **[0.5]**, which means the airflow is **LOW** & require **MORE** time to dry.

#### OUTRÉFIT BASIC



The highest rating for Rightway's Outréfit Basic is **[1.8]**, which means the airflow is **HIGH** & require **LESS** time to dry.

### 5. SILKSCREEN & HEATPRESS PRINTING

#### EYELET MICROFIBER



You will see holes came up on the surface which reduces the **QUALITY** of logo / artwork compared to **OUTRÉFIT BASIC**.

#### OUTRÉFIT BASIC

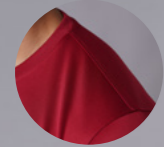


**OUTRÉFIT BASIC** fabric specially created for print purpose. It keeps your logo **ALIVE & SHARP**.



# OUTRÉFIT BASIC

- UNISEX ACTIVE ROUND NECK -



Double needle stitching provides better comfort & durability.



Sleeve length designed to fit both arms, best fit for asian size.



Mini-mesh fabric is made of tiny holes. It's silky smooth.



Back View



# QDR 51

SIZE	SHOULDER	CHEST	SLEEVE	BODY
2XS	14"	17"	6.5"	25"
XS	15"	18"	7"	26"
S	16"	19"	7.5"	27"
M	17"	20"	8"	28"
L	18"	21"	8.5"	29"
XL	19"	22"	9"	30"
2XL	20"	23"	9.5"	31"
3XL	21"	24"	10"	32"
5XL	23"	26"	10.5"	34"

\*Measurement may be different [0.5] inches from actual product\*

Material : Mini Mesh 100% Microfiber

Weight : 150 gsm

Size : 2XS - 3XL, 5XL (UNISEX)

Recommended For:





# OUTRÉFIT BASIC

- KIDS ACTIVE ROUND NECK -



# QDY 61

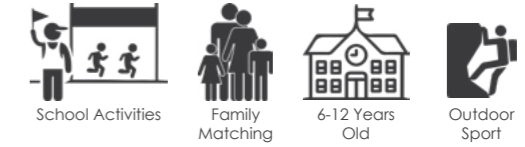
NEW DESIGN

SIZE	SHOULDER	CHEST	SLEEVE	BODY
28	11"	14"	5.5"	19"
30	12"	15"	6"	21"
32	13"	16"	6.5"	23"

\*Measurement may be different [0.5] inches from actual product\*

Material : Mini Mesh 100% Microfiber  
 Weight : 150 gsm  
 Size : 28, 30 & 32 (6-12 years old)

Recommended For:



**QDY 6100**  
SNOWY WHITE



**QDY 6102**  
APPLE GREEN



**QDY 6103**  
LEMON YELLOW



**QDY 6104**  
FRESH ORANGE



**QDY 6107**  
ROYAL BLUE



**QDY 6108**  
MAROON



**QDY 6109**  
NAVY BLUE



**QDY 6110**  
PIRATE BLACK



**QDY 6111**  
BLACKBERRY  
PURPLE



**QDY 6112**  
TOMATO RED



**QDY 6113**  
LIGHT PINK



**QDY 6115**  
ARMY GREEN



**QDY 6118**  
OCEAN BLUE



**QDY 6121**  
ICY MINT



**QDY 6124**  
KNIGHT GREY



**QDY 6125**  
VOLT GREEN



**QDY 6126**  
NEON YELLOW



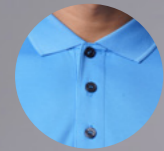
**QDY 6127**  
SAFETY ORANGE

OUTRÉFIT BASIC



# OUTRÉFIT BASIC

- UNISEX ACTIVE POLO -



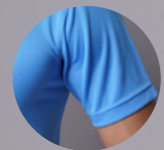
Grey button with marble design gives polo a classy look.



High density knitted collar looks firm, tidy & professional.



Double needle stitching provides better comfort & durability.



Sleeve length designed to fit both arms, best fit for asian size.



Back View



# QDP 53

NEW DESIGN

SIZE	SHOULDER	CHEST	SLEEVE	BODY
2XS	14"	17"	6.5"	25"
XS	15"	18"	7"	26"
S	16"	19"	7.5"	27"
M	17"	20"	8"	28"
L	18"	21"	8.5"	29"
XL	19"	22"	9"	30"
2XL	20"	23"	9.5"	31"
3XL	21"	24"	10"	32"
5XL	23"	26"	11"	34"

\*Measurement may be different [0.5] inches from actual product\*

Material : Mini Mesh 100% Microfiber

Weight : 150 gsm

Size : 2XS - 3XL, 5XL (UNISEX)

\*5xl is available for QDP 5309, QDP 5310 only\*

Recommended For:



**QDP 5300**  
SNOWY WHITE



**QDP 5302**  
APPLE GREEN



**QDP 5303**  
LEMON YELLOW



**QDP 5304**  
FRESH ORANGE



**QDP 5307**  
ROYAL BLUE



**QDP 5308**  
MAROON



**QDP 5309**  
NAVY BLUE



**QDP 5310**  
PIRATE BLACK



**QDP 5311**  
BLACKBERRY  
PURPLE



**QDP 5312**  
TOMATO RED



**QDP 5313**  
LIGHT PINK



**QDP 5315**  
ARMY GREEN



**QDP 5318**  
OCEAN BLUE



**QDP 5321**  
ICY MINT



**QDP 5324**  
KNIGHT GREY

OUTRÉFIT BASIC



# OUTRÉFIT BASIC

- UNISEX ACTIVE SLEEVELESS -



Double needle stitching provides better comfort & durability.



Back View



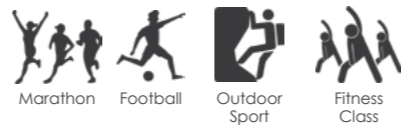
# QDS 50

Material : Mini Mesh 100% Microfiber  
 Weight : 150 gsm  
 Size : 2XS - 3XL (UNISEX)

SIZE	SHOULDER	CHEST	BODY
2XS	14"	17"	25"
XS	15"	18"	26"
S	16"	19"	27"
M	17"	20"	28"
L	18"	21"	29"
XL	19"	22"	30"
2XL	20"	23"	31"
3XL	21"	24"	32"

\*Measurement may be different [0.5] inches from actual product\*

Recommended For:



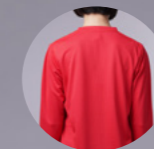
# OUTRÉFIT BASIC

- UNISEX ACTIVE LONG SLEEVE -

NEW DESIGN



Double needle stitching provides better comfort & durability.



Back View



Loose sleeve provides room for stretching your body.



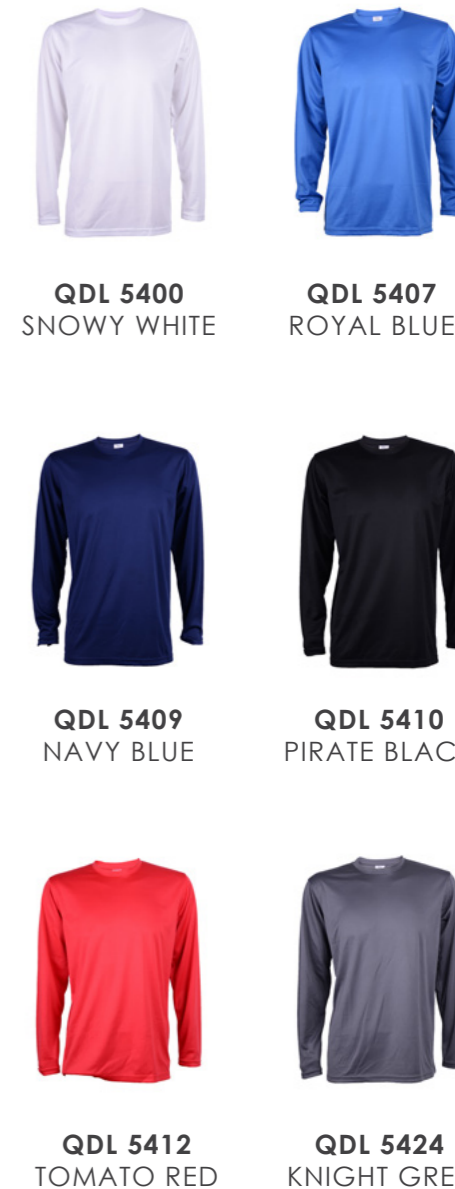
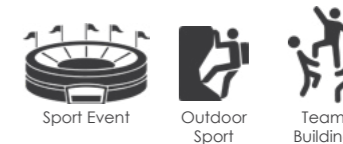
# QDL 54

Material : Mini Mesh 100% Microfiber  
 Weight : 150 gsm  
 Size : S - 3XL (UNISEX)

SIZE	SHOULDER	CHEST	SLEEVE	BODY
S	16"	19"	24"	27"
M	17"	20"	24"	28"
L	18"	21"	24"	29"
XL	19"	22"	25"	30"
2XL	20"	23"	25"	31"
3XL	21"	24"	25"	32"

\*Measurement may be different [0.5] inches from actual product\*

Recommended For:



OUTRÉFIT BASIC



# OUTRÉFIT PREMIUM

PREMIUM QUALITY PLAIN COLLECTION

プレミアム品質 プレーンコレクション





# Normal T-Shirt



Tight neckline. It will irritate your neck for long hour workout.

Loose sleeve makes the person look big & untidy.

# OUTRÉFIT Premium



Back View



Wide neck width design.

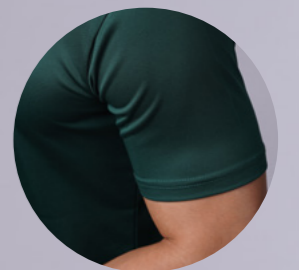
Standard waist fit to stay loose, hide your belly away.



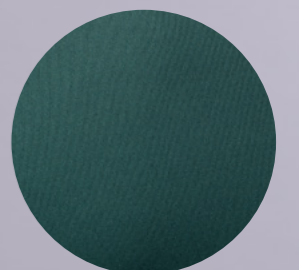
Seamless neckline gives extra comfort to wear.



High density sewing technique on shoulder & sleeve.



Armhole & sleeve cuff fitted from your shoulder to arm.



Silky smooth fabric surface. It feels lighter, cooler to wear.

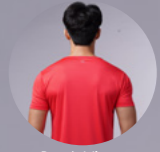


# OUTRÉFIT PREMIUM

- UNISEX LIFESTYLE ROUND NECK DESIGN -



Side View



Back View



# MOR

SIZE	SHOULDER	CHEST	SLEEVE	BODY
S	16"	19"	7.5"	27"
M	17"	20"	8"	28"
L	18"	21"	8.5"	29"
XL	19"	22"	9"	30"
2XL	20"	23"	9.5"	31"
3XL	21"	24"	10"	32"

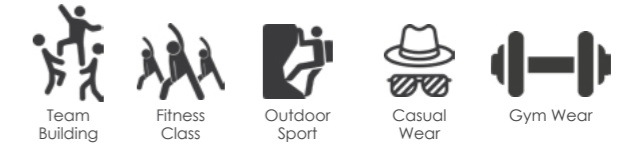
\*Measurement may be different [0.5] inches from actual product\*

Material : Microfiber Interlock

Weight : 150 gsm

Size : S - 3XL (UNISEX)

Recommended For:



**MOR 00** SNOWY WHITE    **MOR 02** APPLE GREEN    **MOR 03** YELLOW    **MOR 06** TURQUOISE    **MOR 07** ROYAL BLUE    **MOR 08** MAROON



**MOR 09** NAVY BLUE    **MOR 10** PIRATE BLACK    **MOR 11** PURPLE    **MOR 12** CLASSIC RED    **MOR 15** ARMY GREEN    **MOR 18** OCEAN BLUE



**MOR 21** ICY MINT    **MOR 24** KNIGHT GREY    **MOR 25** VOLT GREEN    **MOR 28** NEON RED



# Normal T-Shirt



Loose sleeve makes ladies look big.

Straight cut looks oversized & unfidy.

Sleeve is too long for ladies.

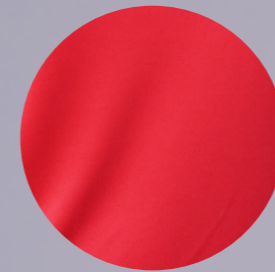
# OUTRÉFIT Premium



Seamless neckline gives extra comfort to wear.



Ladies look way better with shorter sleeve length.



Silky smooth surface. It feels lighter, cooler to wear.



Back View

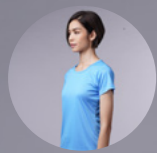


Curve waist cut enhance your body styleline.



# OUTRÉFIT PREMIUM

- WOMEN LIFESTYLE ROUND NECK DESIGN -



Side View



Back View



# WOR

SIZE	SHOULDER	CHEST	WAIST	SLEEVE	BODY
S	13"	16"	15"	6"	22.5"
M	14"	17"	16"	6.5"	23.5"
L	15"	18"	17"	6.5"	24.5"
XL	16"	19"	18"	7"	25.5"

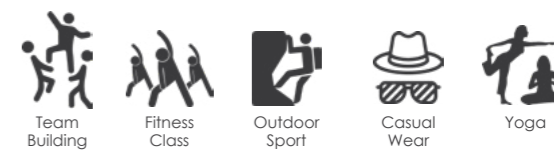
\*Measurement may be different [0.5] inches from actual product\*

Material : Microfiber Interlock

Weight : 150 gsm

Size : S - XL (WOMEN)

Recommended For:



**WOR 00** SNOWY WHITE    **WOR 02** APPLE GREEN    **WOR 03** YELLOW    **WOR 06** TURQUOISE    **WOR 07** ROYAL BLUE    **WOR 08** MAROON



**WOR 09** NAVY BLUE    **WOR 10** PIRATE BLACK    **WOR 11** PURPLE    **WOR 12** CLASSIC RED    **WOR 15** ARMY GREEN    **WOR 18** OCEAN BLUE



**WOR 21** ICY MINT    **WOR 24** KNIGHT GREY    **WOR 25** VOLT GREEN    **WOR 28** NEON RED

OUTRÉFIT PREMIUM



# Normal Polo



# OUTRÉFIT Premium Polo



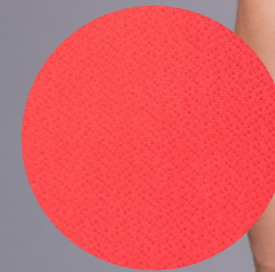
Looks professional with executive collar, often used by formal shirt.



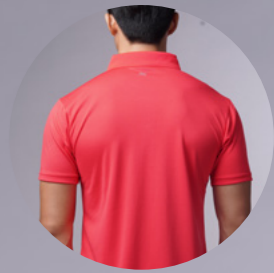
Grey button with marble design gives polo a classy look.



Double needle stitching provides better comfort & durability.



Stellar micro fabric wicks moisture away and dries quickly.



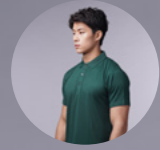
Back View



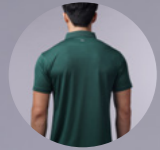


# OUTRÉFIT PREMIUM

- UNISEX EXECUTIVE POLO DESIGN -



Side View



Back View



# MOP

SIZE	SHOULDER	CHEST	SLEEVE	BODY
S	16"	19"	7.5"	27"
M	17"	20"	8"	28"
L	18"	21"	8.5"	29"
XL	19"	22"	9"	30"
2XL	20"	23"	9.5"	31"
3XL	21"	24"	10"	32"

\*Measurement may be different [0.5] inches from actual product\*

Material : Stellar Micro Interlock  
 Weight : 150 gsm  
 Size : S - 3XL (UNISEX)

Recommended For:



**MOP 00**  
SNOWY WHITE



**MOP 07**  
ROYAL BLUE



**MOP 08**  
MAROON



**MOP 09**  
NAVY BLUE



**MOP 10**  
PIRATE BLACK



**MOP 11**  
MAJESTY PURPLE



**MOP 12**  
CLASSIC RED



**MOP 15**  
ARMY GREEN



**MOP 21**  
ICY MINT



**MOP 24**  
KNIGHT GREY



# Normal Polo



Wide & soft collar looks untidy and unpresentable.

Sleeve is too long for ladies.

Loose sleeve makes ladies look big.

Straight cut looks oversized & untidy.

# OUTRÉFIT Premium Polo



Looks professional with executive collar, often used by formal shirt.



Grey button with marble design gives polo a classy look.



Double needle stitching provides better comfort & durability.



Stellar micro fabric wicks moisture away and dries quickly.



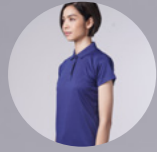
Back View

Curve waist cut enhance your body styleline.



# OUTRÉFIT PREMIUM

- WOMEN EXECUTIVE POLO DESIGN -



Side View



Back View



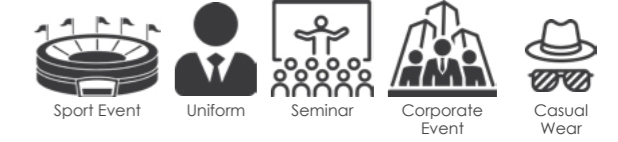
# WOP

SIZE	SHOULDER	CHEST	WAIST	SLEEVE	BODY
S	13"	16"	15"	6"	22.5"
M	14"	17"	16"	6.5"	23.5"
L	15"	18"	17"	6.5"	24.5"
XL	16"	19"	18"	7"	25.5"

\*Measurement may be different [0.5] inches from actual product\*

Material : Stellar Micro Interlock  
 Weight : 150 gsm  
 Size : S - XL (WOMEN)

Recommended For:



**WOP 00**  
SNOWY WHITE



**WOP 07**  
ROYAL BLUE



**WOP 08**  
MAROON



**WOP 09**  
NAVY BLUE



**WOP 10**  
PIRATE BLACK



**WOP 11**  
MAJESTY PURPLE



**WOP 12**  
CLASSIC RED



**WOP 15**  
ARMY GREEN



**WOP 21**  
ICY MINT



**WOP 24**  
KNIGHT GREY



# OUTRÉFIT PREMIUM

PREMIUM QUALITY REFLECTIVE DESIGN

プレミアム品質の反射型デザイン





# OUTRÉFIT PREMIUM

- REFLECTIVE ZIPPED DESIGN -

# MOZ 45

# OUTRÉFIT PREMIUM

- WOMEN REFLECTIVE ZIPPED DESIGN -

# WOZ 45

Material : Stellar Micro Interlock  
 Weight : 150 gsm  
 Size : S - 3XL (UNISEX)

SIZE	SHOULDER	CHEST	SLEEVE	BODY
S	16"	19"	7.5"	27"
M	17"	20"	8"	28"
L	18"	21"	8.5"	29"
XL	19"	22"	9"	30"
2XL	20"	23"	9.5"	31"
3XL	21"	24"	10"	32"

\*Measurement may be different [0.5] inches from actual product\*

Recommended For:



**MOZ 4500**  
SNOWY WHITE

**MOZ 4507**  
ROYAL BLUE



**MOZ 4509**  
NAVY BLUE

**MOZ 4510**  
PIRATE BLACK



**MOZ 4512**  
CLASSIC RED

**MOZ 4524**  
KNIGHT GREY

Material : Stellar Micro Interlock  
 Weight : 150 gsm  
 Size : S - XL (WOMEN)

SIZE	SHOULDER	CHEST	WAIST	SLEEVE	BODY
S	13"	16"	15"	6"	22.5"
M	14"	17"	16"	6.5"	23.5"
L	15"	18"	17"	6.5"	24.5"
XL	16"	19"	18"	7"	25.5"

\*Measurement may be different [0.5] inches from actual product\*

Recommended For:



**WOZ 4500**  
SNOWY WHITE

**WOZ 4507**  
ROYAL BLUE



**WOZ 4509**  
NAVY BLUE

**WOZ 4510**  
PIRATE BLACK



**WOZ 4512**  
CLASSIC RED

**WOZ 4524**  
KNIGHT GREY



Reflective on the zip grabs attention when it reflects.



Collar won't open up easily with Auto-Lock Zip design.



A sewing technique to look slimmer, often used by expensive sport brands.



Back View



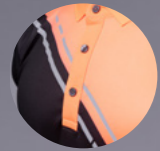
Reflective stripe to enhance visibility for outdoor activities.



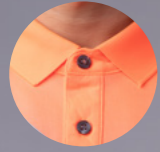


# OUTRÉFIT PREMIUM

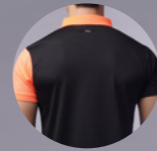
- REFLECTIVE CROSS DESIGN -



Reflective stripes on the chest grabs attention when it reflects.



Looks professional with executive collar, often used by formal shirt.



Back View



# MOP 43

Material : Stellar Micro Interlock  
 Weight : 150 gsm  
 Size : S - 3XL (UNISEX)

SIZE	SHOULDER	CHEST	SLEEVE	BODY
S	16"	19"	7.5"	27"
M	17"	20"	8"	28"
L	18"	21"	8.5"	29"
XL	19"	22"	9"	30"
2XL	20"	23"	9.5"	31"
3XL	21"	24"	10"	32"

\*Measurement may be different [0.5] inches from actual product\*

Recommended For:



**MOP 4304**  
BLACK / SAFETY ORANGE



**MOP 4307**  
BLACK / ROYAL BLUE



**MOP 4312**  
BLACK / CLASSIC RED

# OUTRÉFIT PREMIUM

- WOMEN REFLECTIVE CROSS DESIGN -



# WOP 43

Material : Stellar Micro Interlock  
 Weight : 150 gsm  
 Size : S - XL (WOMEN)

SIZE	SHOULDER	CHEST	WAIST	SLEEVE	BODY
S	13"	16"	15"	6"	22.5"
M	14"	17"	16"	6.5"	23.5"
L	15"	18"	17"	6.5"	24.5"
XL	16"	19"	18"	7"	25.5"

\*Measurement may be different [0.5] inches from actual product\*

Recommended For:



**WOP 4304**  
BLACK / SAFETY ORANGE



**WOP 4307**  
BLACK / ROYAL BLUE



**WOP 4312**  
BLACK / CLASSIC RED

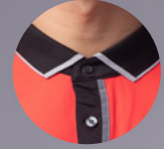


# OUTRÉFIT PREMIUM

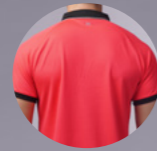
- REFLECTIVE PLACKET DESIGN -



Reflective on the placket grabs attention when it reflects.



Looks professional with executive collar, often used by formal shirt.



Back View



# MOP 46

Material : Stellar Micro Interlock  
 Weight : 150 gsm  
 Size : S - 3XL (UNISEX)

SIZE	SHOULDER	CHEST	SLEEVE	BODY
S	16"	19"	7.5"	27"
M	17"	20"	8"	28"
L	18"	21"	8.5"	29"
XL	19"	22"	9"	30"
2XL	20"	23"	9.5"	31"
3XL	21"	24"	10"	32"

\*Measurement may be different [0.5] inches from actual product\*

Recommended For:



**MOP 4609**  
NAVY BLUE



**MOP 4610**  
PIRATE BLACK



**MOP 4612**  
CLASSIC RED

# OUTRÉFIT PREMIUM

- WOMEN REFLECTIVE PLACKET DESIGN -



# WOP 46

Material : Stellar Micro Interlock  
 Weight : 150 gsm  
 Size : S - XL (WOMEN)

SIZE	SHOULDER	CHEST	WAIST	SLEEVE	BODY
S	13"	16"	15"	6"	22.5"
M	14"	17"	16"	6.5"	23.5"
L	15"	18"	17"	6.5"	24.5"
XL	16"	19"	18"	7"	25.5"

\*Measurement may be different [0.5] inches from actual product\*

Recommended For:



**WOP 4609**  
NAVY BLUE



**WOP 4610**  
PIRATE BLACK



**WOP 4612**  
CLASSIC RED

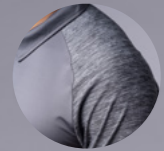


# OUTRÉFIT PREMIUM

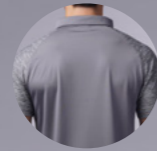
- UNDER-ARMOUR INSPIRED DESIGN -



Collar won't open up easily with Auto-Lock Zip design.



The fabric design is often used by Under-Armour.



Back View



# MOZ 44

Material : Microfiber Interlock  
 Weight : 150 gsm  
 Size : S - 3XL (UNISEX)

SIZE	SHOULDER	CHEST	SLEEVE	BODY
S	16"	19"	7.5"	27"
M	17"	20"	8"	28"
L	18"	21"	8.5"	29"
XL	19"	22"	9"	30"
2XL	20"	23"	9.5"	31"
3XL	21"	24"	10"	32"

\*Measurement may be different [0.5] inches from actual product\*

Recommended For:



**MOZ 4409**  
NAVY BLUE



**MOZ 4410**  
PIRATE BLACK



**MOZ 4424**  
KNIGHT GREY

# OUTRÉFIT PREMIUM

- WOMEN UNDER-ARMOUR INSPIRED DESIGN -

# WOZ 44

Material : Microfiber Interlock  
 Weight : 150 gsm  
 Size : S - XL (WOMEN)

SIZE	SHOULDER	CHEST	WAIST	SLEEVE	BODY
S	13"	16"	15"	6"	22.5"
M	14"	17"	16"	6.5"	23.5"
L	15"	18"	17"	6.5"	24.5"
XL	16"	19"	18"	7"	25.5"

\*Measurement may be different [0.5] inches from actual product\*

Recommended For:



**WOZ 4409**  
NAVY BLUE



**WOZ 4410**  
PIRATE BLACK



**WOZ 4424**  
KNIGHT GREY





# OUTRÉFIT PREMIUM

NEON-TECH SUBLIMATION ROUND / V NECK

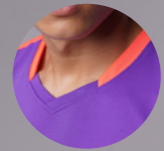
ネオン技術昇華Tシャツ





# OUTRÉFIT PREMIUM

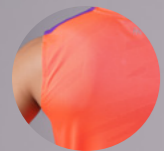
- PERFORMANCE RUNNER DESIGN -



Trendy V-Neck makes the runner look good.



2 types of functional fabrics knitted into design.



Functional fabric with texture design & keep the runner dry.



Back View



# UOS 48

SIZE	SHOULDER	CHEST	BODY
2XS	14"	17"	25"
XS	15"	18"	26"
S	16"	19"	27"
M	17"	20"	28"
L	18"	21"	29"
XL	19"	22"	30"
2XL	20"	23"	31"
3XL	21"	24"	32"

\*Measurement may be different [0.5] inches from actual product\*

Material : Microfiber Micro Mesh

Weight : 150 gsm

Size : 2XS - 3XL (UNISEX)

Recommended For:



**UOS 4809**  
NAVY BLUE / VOLT GREEN



**UOS 4825**  
VOLT GREEN / OCEAN BLUE



**UOS 4828**  
NEON RED / PURPLE

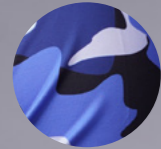


# OUTRÉFIT PREMIUM

- NEON-TECH CAMOUFLAGE DESIGN -



The fabric is smooth & stretchable. Pull as you like.



Neon-tech creates vibrant & sharp colours.



Back View



# MOR 47

Material : Microfiber Interlock  
 Weight : 150 gsm  
 Size : S - 3XL (UNISEX)

SIZE	SHOULDER	CHEST	SLEEVE	BODY
S	16"	19"	7.5"	27"
M	17"	20"	8"	28"
L	18"	21"	8.5"	29"
XL	19"	22"	9"	30"
2XL	20"	23"	9.5"	31"
3XL	21"	24"	10"	32"

\*Measurement may be different [0.5] inches from actual product\*

Recommended For:



**MOR 4709**  
NAVY BLUE



**MOR 4715**  
ARMY GREEN

# OUTRÉFIT PREMIUM

- WOMEN NEON-TECH CAMOUFLAGE DESIGN -

# WOR 47

Material : Microfiber Interlock  
 Weight : 150 gsm  
 Size : S - XL (WOMEN)

SIZE	SHOULDER	CHEST	WAIST	SLEEVE	BODY
S	13"	16"	15"	6"	22.5"
M	14"	17"	16"	6.5"	23.5"
L	15"	18"	17"	6.5"	24.5"
XL	16"	19"	18"	7"	25.5"

\*Measurement may be different [0.5] inches from actual product\*

Recommended For:



**WOR 4709**  
NAVY BLUE



**WOR 4715**  
ARMY GREEN



# OUTRÉFIT PREMIUM

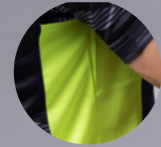
- NEON-TECH CAMOUFLAGE DESIGN -



Loose round neck collar provides extra comfort.



Neon-tech creates vibrant & sharp colours.



Functional fabric to evaporate the sweat, keeping it dry.



Back View



# MOR 39

Material : Microfiber Interlock  
 Weight : 150 gsm  
 Size : S - 3XL (UNISEX)

SIZE	SHOULDER	CHEST	SLEEVE	BODY
S	16"	19"	7.5"	27"
M	17"	20"	8"	28"
L	18"	21"	8.5"	29"
XL	19"	22"	9"	30"
2XL	20"	23"	9.5"	31"
3XL	21"	24"	10"	32"

\*Measurement may be different [0.5] inches from actual product\*

Recommended For:



**MOR 3909**  
NAVY BLUE



**MOR 3918**  
OCEAN BLUE



**MOR 3924**  
KNIGHT GREY

# OUTRÉFIT PREMIUM

- NEON-TECH TWILIGHT DESIGN -



High-level V-neck sewing technique.



Neon-tech creates vibrant & sharp colours.



Functional fabric to evaporate the sweat, keeping it dry.



Back View



# MOV 40

Material : Stellar Micro Interlock  
 Weight : 150 gsm  
 Size : S - 3XL (UNISEX)

SIZE	SHOULDER	CHEST	SLEEVE	BODY
S	16"	19"	7.5"	27"
M	17"	20"	8"	28"
L	18"	21"	8.5"	29"
XL	19"	22"	9"	30"
2XL	20"	23"	9.5"	31"
3XL	21"	24"	10"	32"

\*Measurement may be different [0.5] inches from actual product\*

Recommended For:



**MOV 4009**  
NAVY BLUE



**MOV 4010**  
PIRATE BLACK



**MOV 4012**  
CLASSIC RED

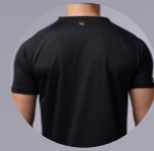


# OUTRÉFIT PREMIUM

- NEON-TECH RED HAWK DESIGN -



High-level V-neck sewing technique.



Back View



Neon-tech creates vibrant & sharp colours.



# MOV 41

Material : Stellar Micro Interlock  
 Weight : 150 gsm  
 Size : S - 3XL (UNISEX)

SIZE	SHOULDER	CHEST	SLEEVE	BODY
S	16"	19"	7.5"	27"
M	17"	20"	8"	28"
L	18"	21"	8.5"	29"
XL	19"	22"	9"	30"
2XL	20"	23"	9.5"	31"
3XL	21"	24"	10"	32"

\*Measurement may be different [0.5] inches from actual product\*

Recommended For:



**MOV 4110**  
PIRATE BLACK



**MOV 4111**  
MAJESTY PURPLE



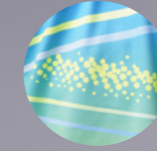
**MOV 4112**  
CLASSIC RED

# OUTRÉFIT PREMIUM

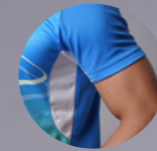
- NEON-TECH SPARKLE DESIGN -



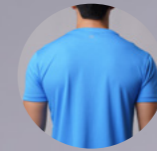
High-level V-neck sewing technique.



Neon-tech creates vibrant & sharp colours.



Functional fabric to evaporate the sweat, keeping it dry.



Back View



# MOV 42

Material : Stellar Micro Interlock  
 Weight : 150 gsm  
 Size : S - 3XL (UNISEX)

SIZE	SHOULDER	CHEST	SLEEVE	BODY
S	16"	19"	7.5"	27"
M	17"	20"	8"	28"
L	18"	21"	8.5"	29"
XL	19"	22"	9"	30"
2XL	20"	23"	9.5"	31"
3XL	21"	24"	10"	32"

\*Measurement may be different [0.5] inches from actual product\*

Recommended For:



**MOV 4202**  
VOLT GREEN



**MOV 4209**  
NAVY BLUE



**MOV 4218**  
OCEAN BLUE



# OUTRÉFIT PREMIUM

NEON-TECH SUBLIMATION POLO

ネオン技術昇華ポロシャツ



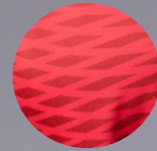


# OUTRÉFIT PREMIUM

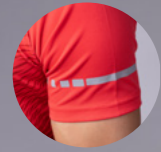
- REFLECTIVE SUBLIMATION DESIGN -



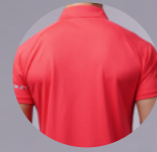
Race cut design for better fitting.



Neon-tech creates vibrant & sharp colours.



Reflective stripe enhance visibility for outdoor activities.



Back View



# MOF 32

Material : Stellar Micro Interlock  
 Weight : 150 gsm  
 Size : S - 3XL (UNISEX)

SIZE	SHOULDER	CHEST	SLEEVE	BODY
S	16"	19"	7.5"	27"
M	17"	20"	8"	28"
L	18"	21"	8.5"	29"
XL	19"	22"	9"	30"
2XL	20"	23"	9.5"	31"
3XL	21"	24"	10"	32"

\*Measurement may be different [0.5] inches from actual product\*

Recommended For:



**MOF 3207**  
ROYAL BLUE



**MOF 3210**  
PIRATE BLACK



**MOF 3212**  
HIGH RISK RED

# OUTRÉFIT PREMIUM

- WOMEN REFLECTIVE SUBLIMATION DESIGN -



# WOF 32

Material : Stellar Micro Interlock  
 Weight : 150 gsm  
 Size : S - XL (WOMEN)

SIZE	SHOULDER	CHEST	WAIST	SLEEVE	BODY
S	13"	16"	15"	6"	22.5"
M	14"	17"	16"	6.5"	23.5"
L	15"	18"	17"	6.5"	24.5"
XL	16"	19"	18"	7"	25.5"

\*Measurement may be different [0.5] inches from actual product\*

Recommended For:



**WOF 3207**  
ROYAL BLUE



**WOF 3210**  
PIRATE BLACK



**WOF 3212**  
HIGH RISK RED

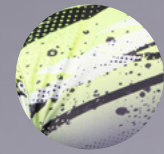


# OUTRÉFIT PREMIUM

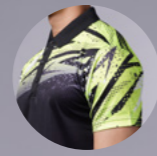
- NEON-TECH HARIMAU DESIGN -



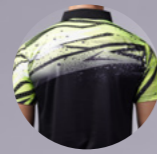
Looks professional with executive collar, often used by formal shirt.



Neon-tech creates vibrant & sharp colours.



Full sublimation print from front to back.



Back View



# MOF 33

Material : Microfiber Interlock  
 Weight : 150 gsm  
 Size : S - 3XL (UNISEX)

SIZE	SHOULDER	CHEST	SLEEVE	BODY
S	16"	19"	7.5"	27"
M	17"	20"	8"	28"
L	18"	21"	8.5"	29"
XL	19"	22"	9"	30"
2XL	20"	23"	9.5"	31"
3XL	21"	24"	10"	32"

\*Measurement may be different [0.5] inches from actual product\*

Recommended For:



**MOF 3310**  
 PIRATE BLACK / VOLT GREEN



**MOF 3312**  
 CLASSIC RED / PIRATE BLACK

# OUTRÉFIT PREMIUM

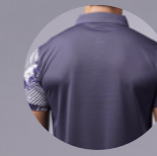
- NEON-TECH ASYMMETRIC DESIGN -



Looks professional with executive collar, often used by formal shirt.



Neon-tech creates vibrant & sharp colours.



Back View



# MOF 34

Material : Microfiber Interlock  
 Weight : 150 gsm  
 Size : S - 3XL (UNISEX)

SIZE	SHOULDER	CHEST	SLEEVE	BODY
S	16"	19"	7.5"	27"
M	17"	20"	8"	28"
L	18"	21"	8.5"	29"
XL	19"	22"	9"	30"
2XL	20"	23"	9.5"	31"
3XL	21"	24"	10"	32"

\*Measurement may be different [0.5] inches from actual product\*

Recommended For:



**MOF 3418**  
 OCEAN BLUE / YELLOW

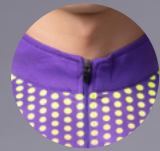


**MOF 3424**  
 KNIGHT GREY / NAVY BLUE



# OUTRÉFIT PREMIUM

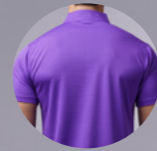
- NEON-TECH RACING DESIGN -



Collar won't open up easily with Auto-Lock Zip design.



Neon-tech creates vibrant & sharp colours.



Back View



# MOF 35

Material : Stellar Micro Interlock  
Weight : 150 gsm  
Size : S - 3XL (UNISEX)

SIZE	SHOULDER	CHEST	SLEEVE	BODY
S	16"	19"	7.5"	27"
M	17"	20"	8"	28"
L	18"	21"	8.5"	29"
XL	19"	22"	9"	30"
2XL	20"	23"	9.5"	31"
3XL	21"	24"	10"	32"

\*Measurement may be different [0.5] inches from actual product\*

Recommended For:



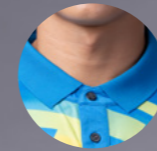
**MOF 3509**  
NAVY BLUE



**MOF 3511**  
MAJESTY PURPLE

# OUTRÉFIT PREMIUM

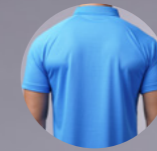
- NEON-TECH TIME LAPSE DESIGN -



Looks professional with executive collar, often used by formal shirt.



Neon-tech creates vibrant & sharp colours.



Back View



# MOF 36

Material : Stellar Micro Interlock  
Weight : 150 gsm  
Size : S - 3XL (UNISEX)

SIZE	SHOULDER	CHEST	SLEEVE	BODY
S	16"	19"	7.5"	27"
M	17"	20"	8"	28"
L	18"	21"	8.5"	29"
XL	19"	22"	9"	30"
2XL	20"	23"	9.5"	31"
3XL	21"	24"	10"	32"

\*Measurement may be different [0.5] inches from actual product\*

Recommended For:



**MOF 3610**  
PIRATE BLACK / ORANGE



**MOF 3612**  
RED / NAVY BLUE

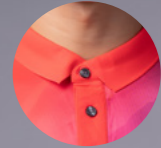


**MOF 3618**  
OCEAN BLUE / YELLOW



# OUTRÉFIT PREMIUM

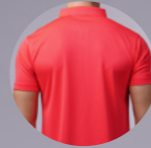
- NEON-TECH FINE ART DESIGN -



Looks professional with executive collar, often used by formal shirt.



Neon-tech creates vibrant & sharp colours.



Back View



# MOF 37

Material : Microfiber Interlock  
Weight : 150 gsm  
Size : S - 3XL (UNISEX)

SIZE	SHOULDER	CHEST	SLEEVE	BODY
S	16"	19"	7.5"	27"
M	17"	20"	8"	28"
L	18"	21"	8.5"	29"
XL	19"	22"	9"	30"
2XL	20"	23"	9.5"	31"
3XL	21"	24"	10"	32"

\*Measurement may be different [0.5] inches from actual product\*

Recommended For:



**MOF 3709**  
NAVY BLUE



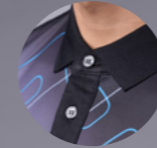
**MOF 3712**  
RED



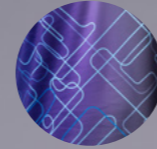
**MOF 3718**  
OCEAN BLUE

# OUTRÉFIT PREMIUM

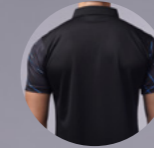
- NEON-TECH GALAXY DESIGN -



Looks professional with executive collar, often used by formal shirt.



Neon-tech creates vibrant & sharp colours.



Back View



# MOF 38

Material : Microfiber Interlock  
Weight : 150 gsm  
Size : S - 3XL (UNISEX)

SIZE	SHOULDER	CHEST	SLEEVE	BODY
S	16"	19"	7.5"	27"
M	17"	20"	8"	28"
L	18"	21"	8.5"	29"
XL	19"	22"	9"	30"
2XL	20"	23"	9.5"	31"
3XL	21"	24"	10"	32"

\*Measurement may be different [0.5] inches from actual product\*

Recommended For:



**MOF 3807**  
ROYAL BLUE



**MOF 3809**  
NAVY BLUE

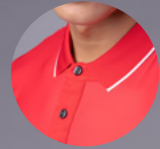


**MOF 3810**  
PIRATE BLACK

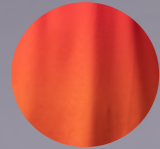


# OUTRÉFIT PREMIUM

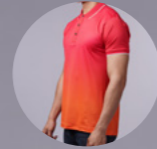
- NEON-TECH GRADIENT DESIGN -



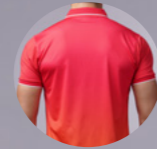
Executive Collar looks professional, often used by formal shirt.



Neon-tech creates vibrant & sharp colours.



Full sublimation print from front to back.



Back View



# MOF 30

Material : Microfiber Interlock  
 Weight : 150 gsm  
 Size : S - 3XL (UNISEX)

SIZE	SHOULDER	CHEST	SLEEVE	BODY
S	16"	19"	7.5"	27"
M	17"	20"	8"	28"
L	18"	21"	8.5"	29"
XL	19"	22"	9"	30"
2XL	20"	23"	9.5"	31"
3XL	21"	24"	10"	32"

\*Measurement may be different [0.5] inches from actual product\*

Recommended For:



**MOF 3007**  
MALIBU BLUE



**MOF 3012**  
SCARLET RED

# OUTRÉFIT PREMIUM

- NEON-TECH ABSTRACT DESIGN -



Looks professional with executive collar, often used by formal shirt.



Neon-tech creates vibrant & sharp colours.



Back View



# MOF 31

Material : Stellar Micro Interlock  
 Weight : 150 gsm  
 Size : S - 3XL (UNISEX)

SIZE	SHOULDER	CHEST	SLEEVE	BODY
S	16"	19"	7.5"	27"
M	17"	20"	8"	28"
L	18"	21"	8.5"	29"
XL	19"	22"	9"	30"
2XL	20"	23"	9.5"	31"
3XL	21"	24"	10"	32"

\*Measurement may be different [0.5] inches from actual product\*

Recommended For:



**MOF 3109**  
NAVY BLUE / OCEAN BLUE



**MOF 3112**  
RED / YELLOW



# CASUAL & CORPORATE

COTTON TEE & POLO, VEST & JACKET

綿のTポロシャツ, ジャケット



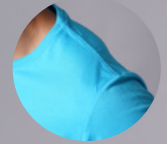


# PURE COTTON BASIC

- COTTON SOFT ROUND NECK -



Wide neckline makes it comfortable to wear.



Double needle stitching provides better comfort & durability.



Made of 100% cotton, comfort soft & stretchy.



Back View



# RN1

SIZE	SHOULDER	CHEST	SLEEVE	BODY
XS	15"	18"	7"	25"
S	16"	19"	7.5"	26"
M	17"	20"	8"	27"
L	18"	21"	8.5"	28"
XL	19"	22"	9"	29"
2XL	20"	23"	9.5"	30"
3XL	21"	24"	10"	31"
5XL	23"	26"	11"	33"

\*Measurement may be different [0.5] inches from actual product\*

Material : 100% Cotton  
 Weight : 160 gsm  
 Size : XS - 3XL, 5XL (UNISEX)

Recommended For:



**RN 100**  
SNOWY WHITE



**RN 102**  
LIME GREEN



**RN 103**  
SUN YELLOW



**RN 104**  
CARROT ORANGE



**RN 105**  
GREY MELANGE



**RN 107**  
ROYAL BLUE



**RN 109**  
NAVY BLUE



**RN 110**  
PIRATE BLACK



**RN 111**  
MAJESTY PURPLE



**RN 112**  
CLASSIC RED



**RN 118**  
MALIBU BLUE



# HONEYCOMB BASIC

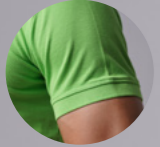
- UNISEX SIGNATURE COTTON POLO -



Classic transparent colour button.



Double needle stitching provides better comfort & durability.



Grip on the sleeve fits arms better.



Split hemline is easier to tuck in & pull out



Back View



# HC 80

SIZE	SHOULDER	CHEST	SLEEVE	BODY
XS	15"	18"	7"	25"
S	16"	19"	7.5"	26"
M	17"	20"	8"	27"
L	18"	21"	8.5"	28"
XL	19"	22"	9"	29"
2XL	20"	23"	9.5"	30"
3XL	21"	24"	10"	31"

\*Measurement may be different [0.5] inches from actual product\*

Material : 60% Cotton, 40% Polyester  
 Weight : 220 gsm, white (240gsm)  
 Size : XS - 3XL (UNISEX)

Recommended For:



HONEYCOMB



# CORPORATE SERIES

- UNISEX CORPORATE JACKET -

# PATTERN B

# CORPORATE SERIES

- UNISEX CONTRACTOR SAFETY VEST -

# SV

Material : Gabardine Fabric  
 : 65% Polyester 35% Viscose  
 Weight : 240 gsm  
 Size : XS - 4XL (UNISEX)

Material : 100% Polyester  
 Size : FREE Size

SIZE	SHOULDER	CHEST	BODY
FREE	18"	23"	28"

\*Measurement may be different [0.5] inches from actual product\*

SIZE	SHOULDER	CHEST	SLEEVE	BODY
XS	17.5"	20"	21"	24"
S	18"	21"	21.5"	25"
M	18.5"	22"	22"	26"
L	19"	23"	22.5"	27"
XL	19.5"	24"	23"	28"
2XL	20"	25"	23.5"	29"
3XL	20.5"	26"	24"	30"
4XL	21"	27"	24.5"	31"

\*Measurement may be different [0.5] inches from actual product\*

Recommended For:

Work Uniform    Government    Corporate Event    Air-Conditioned Workplace

Recommended For:

Construction    Factory Wear

Stainless Steel Chrome coated zip.    Padded shoulder shows professionalism.    2 pockets to keep your belongings.    Buttons provides flexibility to pull up sleeve.

Inner pocket to keep phone or namecard.    Back View



PATTERN B  
BLACK



SV 01  
FLUORESCENT YELLOW



SV 02  
SAFETY ORANGE



SV 03  
FLUORESCENT YELLOW  
(POCKET)



SV 04  
FLUORESCENT YELLOW  
(NO POCKET)



# OUTRÉFIT PREMIUM

JERSEY & JACKETS

ジャージ & ジャケット





# TRACK JACKET



CASUAL  
カジュアル



TRAVEL  
トラベル

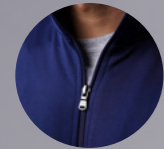


WORK  
務める



# OUTRÉFIT Premium

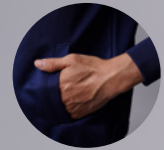
- MULTI-PURPOSE TRACK JACKET -



Stainless-Steel chrome coated zip.



High collar keeps you warm & avoid direct sunlight for neck.



2 pockets to keep your personal belongings.



Back View



# TJ1

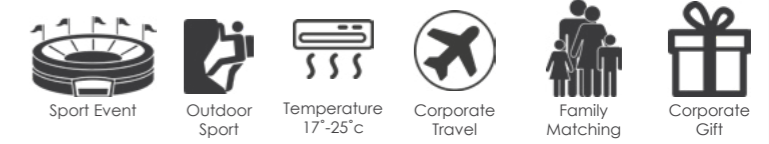
NEW DESIGN

SIZE	SHOULDER	CHEST	SLEEVE	BODY
XS	16"	20"	22"	25"
S	17"	21"	23"	26"
M	18"	22"	24"	27"
L	19"	23"	25"	28"
XL	20"	24"	26"	29"
2XL	21"	25"	27"	30"
3XL	22"	26"	28"	31"

\*Measurement may be different [0.5] inches from actual product\*

Material : Matte Korea Silk  
 Weight : 230 gsm  
 Size : XS - 3XL (UNISEX)

Recommended For:



CASUAL



TRAVEL



WORK



TJ 100  
SNOWY WHITE



TJ 108  
MAROON



TJ 109  
NAVY BLUE



TJ 110  
PIRATE BLACK



TJ 112  
CLASSIC RED



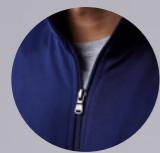
TJ 115  
ARMY GREEN

SPORT



# OUTRÉFIT Premium

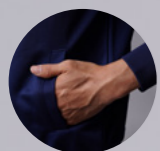
- KIDS MULTI-PURPOSE TRACK JACKET -



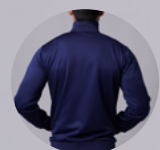
Stainless-Steel chrome coated zip.



High collar keeps you warm & avoid direct sunlight for neck.



2 pockets to keep your personal belongings.



Back View



# YTJ1

NEW DESIGN

SIZE	SHOULDER	CHEST	SLEEVE	BODY
28	12"	16"	18"	21"
30	13"	17"	19"	22"
32	14"	18"	20"	23"

\*Measurement may be different [0.5] inches from actual product\*

Material : Matte Korea Silk  
 Weight : 230 gsm  
 Size : 28, 30, 32 (UNISEX)

Recommended For:



**YTJ 100**  
SNOWY WHITE



**YTJ 108**  
MAROON



**YTJ 109**  
NAVY BLUE



**YTJ 110**  
PIRATE BLACK



**YTJ 112**  
CLASSIC RED



**YTJ 115**  
ARMY GREEN

SPORT



# OUTRÉFIT Premium

- SEA GAMES INSPIRED TRACK JACKET -



Stainless-Steel chrome coated zip.



2 pockets to keep your personal belongings.



Neon-Tech creates vibrant & sharp colours.



Back View



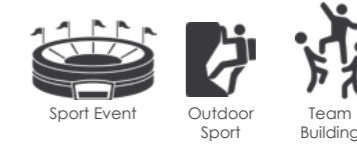
# TT2

SIZE	SHOULDER	CHEST	SLEEVE	BODY
S	18"	21"	22"	26"
M	18.5"	22"	22.5"	27"
L	19"	23"	23"	28"
XL	19.5"	24"	23.5"	29"
2XL	20"	25"	24"	30"
3XL	20.5"	26"	24.5"	31"

\*Measurement may be different [0.5] inches from actual product\*

Material : Korea Silk  
 Weight : 200 gsm  
 Size : S - 3XL (UNISEX)

Recommended For:



**TT 209**  
NAVY BLUE

**TT 212**  
CLASSIC RED

**TT 311**  
MAJESTY PURPLE

**TT 324**  
KNIGHT GREY

SPORT



# OUTRÉFIT Premium

- STRETCHABLE PERFORMANCE PANTS -



2 Pockets to keep your personal belongings.



Loose leg opening prevents the pant pulls up.



Highly stretchable, suits for any workout.



Light, Loose & comfortable.

## SP10

SIZE	WAIST	LENGTH
S	26"-33"	16"
M	27"-34"	16.5"
L	28"-35"	17"
XL	29"-36"	17.5"
2XL	30"-37"	18"
3XL	31"-38"	18.5"

Material : Korea Silk  
Weight : 200 gsm  
Size : S - 3XL (UNISEX)

\*Measurement may be different [0.5] inches from actual product\*

Recommended For:



Sport Event



Outdoor Sport



Team Building



Fitness Class



SP 10  
PIRATE BLACK

## TB2

SIZE	WAIST	LENGTH
S	26"-33"	39"
M	27"-34"	40"
L	28"-35"	41"
XL	29"-36"	42"
2XL	30"-37"	43"
3XL	31"-38"	44"

Material : Korea Silk  
Weight : 200 gsm  
Size : S - 3XL (UNISEX)

\*Measurement may be different [0.5] inches from actual product\*



TB 200  
SNOWY WHITE



TB 210  
PIRATE BLACK

## YSP10

- KIDS SPORT SHORTS / LONG PANTS -

SIZE	WAIST	LENGTH
28"	21"-28"	13.5"
30"	22"-29"	14"
32"	23"-30"	14.5"

Material : Korea Silk  
Weight : 200 gsm  
Size : 28,30,32 (KIDS)

\*Measurement may be different [0.5] inches from actual product\*

Recommended For:



School Activities



6-12 Years Old



Outdoor Sport



Family Matching



YSP 10  
PIRATE BLACK

SIZE	WAIST	LENGTH
28"	21"-28"	34"
30"	22"-29"	35"
32"	23"-30"	36"

Material : Korea Silk  
Weight : 200 gsm  
Size : 28,30,32 (KIDS)

\*Measurement may be different [0.5] inches from actual product\*

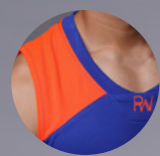


YTB 210  
PIRATE BLACK



# OUTRÉFIT Premium

- UNISEX LIGHTWEIGHT BASKETBALL JERSEY -



2 types of functional fabrics make into a design.



2 pockets to keep your personal belongings.



High density sewing technique on shoulder.



Back View



# BJ 23 / 24

SIZE	CHEST	BODY	PANTS WAIST	PANTS LENGTH
XS	20"	27"	26" - 29"	18"
S	21"	28"	29" - 32"	19"
M	22"	29"	32" - 35"	20"
L	23"	30"	35" - 38"	21"
XL	24"	31"	38" - 43"	22"

\*Measurement may be different [0.5] inches from actual product\*

Material : Microfiber Micro Mesh

Weight : 150 gsm

Size : XS - XL (UNISEX)

Recommended For:



Basketball Training / Competition



**BJ 2300**  
WHITE / GREEN



**BJ 2302**  
GREEN / R. BLUE



**BJ 2304**  
ORANGE / YELLOW



**BJ 2307**  
R. BLUE / ORANGE



**BJ 2312**  
RED / BLACK



**BJ 2402**  
VOLT GREEN



**BJ 2403**  
YELLOW



**BJ 2407**  
ROYAL BLUE



**BJ 2410**  
BLACK



**BJ 2412**  
RED

SPORT



# OUTRÉFIT HEADGEAR

TRENDY PLAIN CAP COLLECTION

流行の キャップコレクション





# OUTRÉFIT Headgear

- UNISEX 6 PANEL BASEBALL CAP -



## H 6

Material : Cotton Wool  
Back : Velcro Stripe

BRIM WIDTH	CIRCUMFERENCE
7cm	58 cm

\*Measurement may be different [0.5] inches from actual product\*

Recommended For:



Sport Event



Corporate Event



Team Building



Corporate Gift



Family Matching



**H 600**  
SNOWY WHITE



**H 601**  
LIGHT BLUE



**H 602**  
APPLE GREEN



**H 603**  
YELLOW



**H 604**  
ORANGE



**H 605**  
GREY



**H 607**  
ROYAL BLUE



**H 608**  
MAROON



**H 609**  
NAVY BLUE



**H 610**  
PIRATE BLACK



**H 611**  
PURPLE



**H 612**  
RED



**H 613**  
PINK



**H 615**  
FOREST GREEN



**H 616**  
KHAKI



**H 617**  
BEIGE



# OUTRÉFIT Headgear

- KIDS 6 PANEL BASEBALL CAP -



# YH 6

**NEW DESIGN**

Material : Cotton Wool  
Back : Velcro Stripe

BRIM WIDTH	CIRCUMFERENCE
6.5cm	54cm

\*Measurement may be different [0.5] inches from actual product\*

Recommended For:



**YH 600**  
SNOWY WHITE



**YH 602**  
APPLE GREEN



**YH 603**  
YELLOW



**YH 604**  
ORANGE



**YH 607**  
ROYAL BLUE



**YH 609**  
NAVY BLUE



**YH 610**  
PIRATE BLACK



**YH 611**  
PURPLE



**YH 612**  
RED



**YH 613**  
PINK



# OUTRÉFIT Headgear

- UNISEX 6 PANEL SNAPBACK CAP -



# OUTRÉFIT Headgear

- KIDS 6 PANEL SNAPBACK CAP -



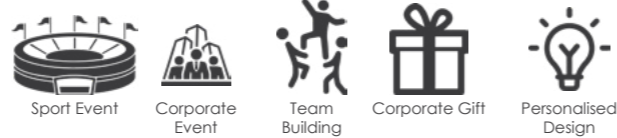
## H 5

Material : Cotton Wool  
Back : Plastic Snap Adjuster

BRIM WIDTH	CIRCUMFERENCE
7cm	58cm

\*Measurement may be different [0.5] inches from actual product\*

Recommended For:



**H 500** SNOWY WHITE    **H 507** ROYAL BLUE    **H 509** NAVY BLUE    **H 510** PIRATE BLACK    **H 512** CLASSIC RED

## YH 5

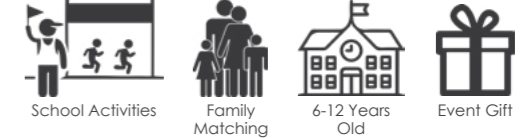
NEW DESIGN

Material : Cotton Wool  
Back : Plastic Snap Adjuster

BRIM WIDTH	CIRCUMFERENCE
6.5cm	54cm

\*Measurement may be different [0.5] inches from actual product\*

Recommended For:



**YH 500** SNOWY WHITE    **YH 509** NAVY BLUE    **YH 510** PIRATE BLACK    **YH 512** CLASSIC RED



# OUTRÉFIT Headgear

- UNISEX 5 PANEL TRUCKER CAP -



## H 7

NEW  
DESIGN

Material : Cotton Wool  
Back : Velcro Stripe

BRIM WIDTH	HEIGHT	CIRCUMFERENCE
7cm	13cm	58cm

\*Measurement may be different [0.5] inches from actual product\*

Recommended For:



Sport Event



Corporate  
Event



Team  
Building



Corporate Gift



Heat Transfer  
Print



H 700  
SNOWY WHITE



H 709  
NAVY BLUE



H 710  
PIRATE BLACK



H 712  
CLASSIC RED



## TUALA OPPA TOWEL

MAXIMUM COMFORT AT LOW-PRICE

低価格で最大の快適さ



# TUALA OPPA

- ECONOMICAL HAND TOWEL -



**TualaOppa™**  
www.tualaoppa.com

# HAND TOWEL



## HT 37

Weight : 80 g  
Size : 33 cm x 71 cm  
Material : 100% Cotton

- |                |             |
|----------------|-------------|
| <b>HT 3701</b> | LIGHT BLUE  |
| <b>HT 3702</b> | LIGHT GREEN |
| <b>HT 3703</b> | YELLOW      |
| <b>HT 3713</b> | PINK        |



## HT 38

Weight : 80 g  
Size : 33 cm x 71 cm  
Material : 100% Cotton

- |                |             |
|----------------|-------------|
| <b>HT 3801</b> | LIGHT BLUE  |
| <b>HT 3802</b> | LIGHT GREEN |
| <b>HT 3803</b> | YELLOW      |
| <b>HT 3813</b> | PINK        |



## HT 39

Weight : 100 g  
Size : 33 cm x 71 cm  
Material : 100% COTTON

- |                |             |
|----------------|-------------|
| <b>HT 3900</b> | WHITE       |
| <b>HT 3901</b> | LIGHT BLUE  |
| <b>HT 3902</b> | LIGHT GREEN |
| <b>HT 3903</b> | YELLOW      |
| <b>HT 3913</b> | PINK        |



# TUALA OPPA

- ECONOMICAL BATH TOWEL -



TualaOppa™  
www.tualaoppa.com

## BT 8

Measurement : 68cm X 137cm

Weight : 350g

Material: 100% Cotton



BT 801  
BLUE



BT 802  
GREEN



BT 803  
YELLOW



BT 806  
TURQUOISE



BT 812  
RED

# OFFER PRODUCTS



LOW-PRICE GUARANTEED

低価格保証された





## OUTRÉFIT ZIPPER

Material : Microfiber Interlock  
 Weight : 150 gsm  
 Size : Unisex : S - 3XL

Details :  
 - Gradient Color Sublimation  
 - Standing Collar with Lock Zipper



**QD 4000**  
WHITE



**QD 4001**  
L. BLUE



**QD 4003**  
YELLOW



**QD 4012**  
CHILI RED

## OUTRÉFIT NEON ZIPPER

Material : Stellar Micro Interlock  
 Weight : 150 gsm  
 Size : Unisex : XS - 3XL

Details :  
 - High Tech Neon sublimation  
 - Standing Collar with Lock Zipper



**QD 4102**  
VOLT GREEN



**QD 4109**  
NAVY BLUE



**QD 4111**  
MAJESTY PURPLE

## OUTRÉFIT NEON COLLARED

Material : Stellar Micro Interlock  
 Weight : 150 gsm  
 Size : Unisex : XS - 3XL

Details :  
 - High Tech Neon sublimation  
 - Standing Collar with buttons



**QD 4204**  
SAFETY ORANGE



**QD 4209**  
NAVY BLUE



**QD 4212**  
CLASSIC RED

WHILE STOCK LAST





## OUTRÉFIT - GYM SHARK -

Material : Cationic Polyester Interlock  
Weight : 150 gsm  
Size : Unisex : S - XL

Details :  
- Slim Fitting Style Line  
- Trim Fit Raglan Sleeve



**MOF 1005**  
KNIGHT GREY



**MOF 1007**  
CLASSIC BLUE



**MOF 1012**  
HAUTE RED



**MOF 1022**  
GRISAILLE BLUE

## OUTRÉFIT - BODY BUILDER -

Material : 100% Microfiber  
Weight : 150 gsm  
Size : Unisex : S - XL

Details :  
- Contemporary Pressed Sleeve Design  
- Trim Fit Raglan Sleeve



**MOF 2005**  
STEEL GREY



**MOF 2010**  
PIRATE BLACK

WHILE STOCK LAST



# BASIC COLLECTION

## - NEW COLLARED -

Material : Bird's Eye Weave 100% Microfiber  
 Weight : 180 gsm  
 Size : Unisex : 2XS - 3XL

Details :  
 - Contrast Buttons Styling  
 - Enhance body fitting



**QD 5202**  
 APPLE GREEN / N. BLUE (B)



**QD 5207**  
 EGYPTIAN BLUE / ORANGE (B)



**QD 5209**  
 NAVY BLUE / YELLOW (B)



**QD 5210**  
 PIRATE BLACK / L. BLUE (B)



**QD 5212**  
 TOMATO RED / WHITE (B)



**QD 5221**  
 ICY MINT / NAVY BLUE (B)



WHILE STOCK LAST





# Signature Polo

## - HC 84 -

Material : CVC - Pique Mesh & Poplin  
Cotton / Chambray Fabric

Weight : 220 gsm

Size : Unisex : S - 3XL



**HC 8410**  
PIRATE BLACK



**HC 8412**  
SCARLET RED



**HC 8415**  
FOREST GREEN

WHILE STOCK LAST



# Signature Polo

- HC 85 - - HC 86 - - HC 87 -

Material : CVC - Pique Mesh & Poplin Cotton /  
Chambray Fabric  
Weight : 220 gsm  
Size : Unisex : XS - 3XL

Details :  
- Classic Three Buttons Down  
- Enhance Masculinity on Sleeve



HC 8509  
NAVY BLUE



HC 8605  
SILVER GREY



HC 8701  
BABY BLUE



HC 8511  
BLACKBERRY PURPLE



HC 8610  
PIRATE BLACK



HC 8719  
CRIMSON BROWN



HC 8512  
SCARLET RED



HC 8622  
GRISAILLE BLUE



HC 8723  
GREY TEAL

WHILE STOCK LAST



- MEN -  
**FASHION ESSENTIAL**  
**V - NECK**

Material : 100 % Premium Combed Cotton  
 Weight : 150 gsm  
 Size : S - XL

Details :  
 - Stylish V - Neck Silhouette  
 - Folded Sleeve with stitches



**MVN 00**  
 SNOWY WHITE

**MVN 10**  
 PIRATE BLACK

**MVN 24**  
 KNIGHT GREY

**ROUND NECK**

Material : 100 % Premium Combed Cotton  
 Weight : 150 gsm  
 Size : S - XL

Details :  
 - Edgy Curves Neckline  
 - Folded Sleeve with stitches



**MRN 00**  
 SNOWY WHITE

**MRN 10**  
 PIRATE BLACK

**MRN 24**  
 KNIGHT GREY

- MEN -  
**FASHION ESSENTIAL**  
**BUTTON TOP**

Material : 100 % Premium Combed Cotton  
 Weight : 150 gsm  
 Size : S - XL

Details :  
 - Perfect Three buttons down  
 - Folded Sleeve with stitches



**MBT 05**  
 GREY MELANGE

**MBT 10**  
 PIRATE BLACK

DETAILS

**HOODIE TOP**

Material : 100% Premium Combed Cotton  
 Weight : 180 gsm  
 Size : Unisex : XS - 3XL

Details :  
 - Hooded top with long sleeve  
 - Loose Fitting Silhouette



**CH 05**  
 GREY MELANGE

**CH 09**  
 NAVY BLUE

**CH 10**  
 PIRATE BLACK

**CH 17**  
 BEIGE MELANGE

**CH 24**  
 KNIGHT GREY



- WOMEN -  
FASHION ESSENTIAL

TURTLENECK

Material : Cotton Spandex  
Weight : 150 gsm  
Size : S, M, L



**WCT 100**  
SNOWY WHITE

**WCT 110**  
PIRATE BLACK

LOOSE TOP

Material : 100% Premium Combed Cotton  
Weight : 150 gsm  
Size : S, M, L



**WLT 00**  
SNOWY WHITE

**WLT 10**  
PIRATE BLACK

SINGLET TOP

Material : Metallic Grey - Polyamine  
Single-sided cation  
Pirate Black - Modal Fabric  
Weight : 180 gsm  
Size : S, M, L



**WST 10**  
PIRATE BLACK

**WST 05**  
METALLIC GREY

CROP TOP

Material : Cotton Spandex  
Weight : 150 gsm  
Size : S, M, L



**WCT 10**  
PIRATE BLACK

- WOMEN -  
FASHION ESSENTIAL

RN CROP TOP

Material : Cotton Spandex  
Weight : 150 gsm  
Size : S, M, L



**WRC 00**  
SNOWY WHITE

**WRC 10**  
PIRATE BLACK

BABY TEE

Material : Cotton Spandex  
Weight : 150 gsm  
Size : S, M, L



**WBA 00**  
SNOWY WHITE

**WBA 10**  
PIRATE BLACK

LONG SLEEVE

Material : Cotton Spandex  
Weight : 150 gsm  
Size : S, M, L



**WLS 10**  
PIRATE BLACK

STRAP TOP

Material : Cotton Spandex  
Weight : 150 gsm  
Size : S, M, L



**WSS 00**  
SNOWY WHITE

**WSS 10**  
PIRATE BLACK

WHILE STOCK LAST



# SUBLIMATION FOOTBALL JERSEY

Material : 100% Microfiber  
Weight : 150 gsm  
Size : XS - XL

Details :  
- Comes with Matching Pants  
- Pockets on Short Pants



**FJ 7000**  
SNOWY WHITE / BLUE / YELLOW



**FJ 7012**  
CHILI RED / YELLOW / WHITE



**FJ 7001**  
MALIBU BLUE / YELLOW / WHITE



**FJ 7003**  
LIGHT YELLOW / BLUE / WHITE



**FJ 7011**  
MAJESTY PURPLE / YELLOW / WHITE

# REVERSIBLE BASKETBALL JERSEY

Material : Microfiber Micro Mesh  
Weight : 150 gsm  
Size : Unisex : XS - XL

Details :  
- Comes with Matching Pants  
- Pockets on Short Pants



**BJ 2200**  
SNOWY WHITE / ICE BLUE



**BJ 2203**  
LIGHT YELLOW / WHITE



**BJ 2211**  
MAJESTY PURPLE / WHITE



**BJ 2212**  
CHILI RED / WHITE

WHILE STOCK LAST



# SPORT SUBLIMATION TRACKSUIT SET

Material : Korea Silk  
Weight : 230 gsm  
Size : Unisex : S - 3XL

Details :  
- Comes with Matching Pants  
- Ribbed Collar with Metal Zipper  
- Functional Pockets available



**TS 303**  
LIGHT YELLOW / BLUE / WHITE

**TS 312**  
CHILI RED / YELLOW / WHITE

**TS 318**  
OCEAN BLUE / YELLOW / WHITE

WHILE STOCK LAST



# MEN'S BASEBALL SHIRT

Material : 100% Microfiber  
 Weight : 210 gsm  
 Size : Unisex : S - XL

Details :  
 - Characterized Design  
 - Mid-length sleeve with sporty printed stripes  
 - Special edge binding on neckline



**MBS 10**  
PIRATE BLACK



**MBS 10**  
BACK VIEW

# OUTDOOR SHORT PANTS

Material : Korea Silk  
 Weight : 230 gsm  
 Size : Unisex : S - XL

Details :  
 - Elastic Waistband  
 - Pockets on pants



**SP 600**  
BLACK / WHITE



**SP 603**  
BLACK / YELLOW



**SP 612**  
BLACK / RED



**SP 618**  
BLACK / BLUE

WHILE STOCK LAST



# OUTRÉLIGHT POCKETABLE HOODIE JACKET

Weight : 70 gsm  
Size : Unisex : XS - 3XL

- Details :
- Can be folded into pocket
  - Water Repellency Coating
  - Ultra Light, suitable for bike rider



**RJ 702**  
VOLT GREEN



**RJ 704**  
SAFETY ORANGE



**RJ 705**  
STEEL GREY



**RJ 709**  
NAVY BLUE



**RJ 712**  
HIGH RISK RED



**RJ 718**  
PARISIAN BLUE



## DISCONTINUED ITEMS

### SANDWICH CAP

MATERIAL : BRUSH COTTON | BACK : BRASS BUCKLE



SW 1210  
RED / BLACK

### COTTON BRUSH

MATERIAL : BRUSH COTTON  
BACK : BRASS BUCKLE



H 09  
NAVY BLUE



H 16  
SANDY KHAKI

### NETTING CAP

MATERIAL : NYLON  
BACK : PLASTIC SNAP ADJUSTER



N 03  
LEMON YELLOW

### 5 PANEL COTTON

MATERIAL : COTTON | BACK : VELCRO



5P 03  
SUNSHINE YELLOW



5P 04  
CARROT ORANGE

### COTTON WOOL SERIES

MATERIAL : COTTON WOOL | BACK : VELCRO



C 0303 G  
YELLOW / GREEN



C 0304 B  
ORANGE / BLACK



C 0407  
ROYAL / YELLOW



C 0404  
ORANGE / WHITE



CW 103  
L. YELLOW / WHITE



CW 104  
ORANGE / WHITE



CW 113  
PINK / WHITE

### COTTON VEST



V 09  
NAVY BLUE

V 10  
PIRATE BLACK

V 17  
BEIGE

### JACKET



RJ 229  
BRIGHT ORANGE / BLACK

RJ 2316  
NAVY BLUE / KHAKI

RJ 231-02  
APPLE GREEN / BLACK

### TRACKSUIT



TS 203  
YELLOW

TS 207  
ROYAL BLUE

TS 212  
RED

TS 2xx  
PANTS

## DISCONTINUED ITEMS

### QUICK DRY



QD 1403  
YELLOW

QD 1402  
APPLE GREEN

QD 1407  
ROYAL BLUE

QD 1404  
ORANGE

QD 1411  
PURPLE

QD 1412  
RED



QD 1800  
WHITE

QD 1802  
APPLE GREEN

QD 1809  
NAVY BLUE

QD 1810  
BLACK

QD 1812  
RED

QD 1818  
BABY BLUE



QD 1900  
WHITE

QD 1902  
APPLE GREEN

QD 1910  
BLACK

QD 3603  
YELLOW

QD 3612  
RED

QD 3618  
OCEAN BLUE



QD 2500  
PURE WHITE

QD 2502  
APPLE GREEN

QD 2503  
YELLOW

QD 2511  
PURPLE

QD 2600  
WHITE

WHILE STOCK LAST



## DISCONTINUED ITEMS

### QUICK DRY



**QD 1302** APPLE GREEN    **QD 1304** ORANGE    **QD 1312** RED    **QD 1310** BLACK    **QD 1309** NAVY BLUE    **QD 1318** BABY BLUE

### SIGNATURE POLO



**HC 8200** WHITE    **HC 8204** LIGHT ORANGE    **HC 8211** PURPLE    **HC 8212** SCARLET RED    **HC 8214** MILO GREEN    **HC 8221** ICY MINT



**HC 8304** WHITE    **HC 8310** BLACK    **HC 8312** SCARLET RED    **HC 8313** PINK    **HC 8003** VANILLA YELLOW

### ALL T-SHIRTS SIZE CHART

SIZE	SHOULDER	CHEST	SLEEVE	BODY
XS	15"	18"	7"	26"
S	16"	19"	7.5"	27"
M	17"	20"	8"	28"
L	18"	21"	8.5"	29"
XL	19"	22"	9"	30"
2XL	20"	23"	9.5"	31"
3XL	21"	24"	10"	32"

### JACKET & TRACKSUIT SIZE CHART

SIZE	SHOULDER	CHEST	SLEEVE	BODY
S	17"	21"	23"	26"
M	18"	22"	24"	27"
L	19"	23"	25"	28"
XL	20"	24"	26"	29"
2XL	21"	25"	27"	30"
3XL	22"	26"	28"	31"

\*Measurements may differ + / - 5% from actual product\*  
\*Measurements in inches\*

## SIZE CHART

### ESSENTIAL COLLECTION

CODE	SIZES	CHEST / BUST	WAIST	BODY LENGTH	SHOULDER	SLEEVE LENGTH	SLEEVE WIDTH
------	-------	--------------	-------	-------------	----------	---------------	--------------

WOMEN BABY TEE (WBA)	S	13.7"	12.5"	22"	13"	5.5"	4.7"
	M	14.7"	13.5"	23"	14"	5.9"	4.7"
	L	15.7"	14.5"	24"	15"	6.3"	5.1"

TURTLENECK CROP TOP (WCT 1xx)	S	13"	-	19"	-	-	-
	M	14"	-	20"	-	-	-
	L	15"	-	21"	-	-	-

WOMEN LOOSE TOP (WLT)	S	20"	-	25"	-	-	-
	M	21"	-	26"	-	-	-
	L	22"	-	27"	-	-	-

WOMEN CROP TOP (WCT)	S	12.5"	-	15"	-	-	-
	M	13.5"	-	16"	-	-	-
	L	14.5"	-	17"	-	-	-

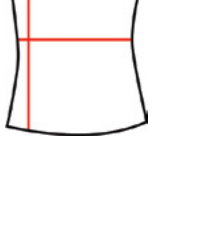
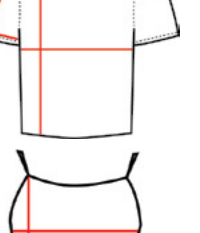
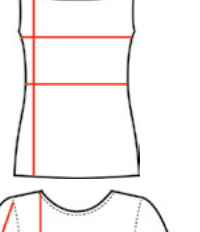
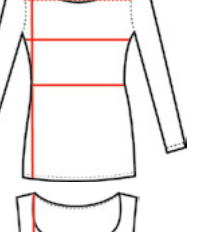
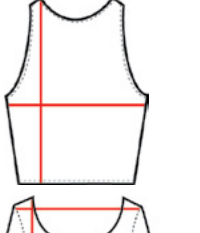
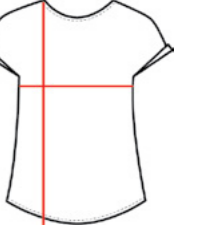
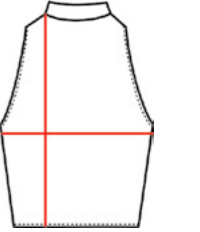
WOMEN LONG SLEEVE (WLS)	S	13.7"	12.4"	22"	13.2"	19.3"	3"
	M	14.7"	13.4"	22.8"	14.2"	19.7"	3.5"
	L	15.7"	14.4"	23.8"	15.2"	20"	4"

SINGLET TOP (WST)	S	13.7"	12.6"	23.6"	-	-	-
	M	14.6"	13.4"	24.4"	-	-	-
	L	15.4"	14.2"	25.2"	-	-	-

ROUND NECK CROP TOP (WRC)	S	15.4"	-	17"	-	6.3"	5.1"
	M	16.4"	-	18"	-	6.7"	5.1"
	L	17.4"	-	19"	-	7"	5.5"

SPAGHETTI STRAP TOP (WSS)	S	13.7"	12.28"	18.5"	-	-	-
	M	14.7"	13.2"	19.5"	-	-	-
	L	15.7"	14.2"	20.5"	-	-	-

MEN ESSENTIAL (MVN, MRN, MBT)	S	19"	-	26"	-	7"	6.7"
	M	20"	-	27"	-	7.5"	6.9"
	L	21"	-	28"	-	7.8"	7"
	XL	22"	-	29"	-	8.3"	7.3"



\*Measurements may differ + / - 5% from actual product\*  
\*Measurements in inches\*



GET FIT  
DON'T  
QUIT

Together We Wear

